

# ČSAD Uherské Hradiště a.s.

## COMPANY PRESENTATION



[www.csaduh.cz](http://www.csaduh.cz)

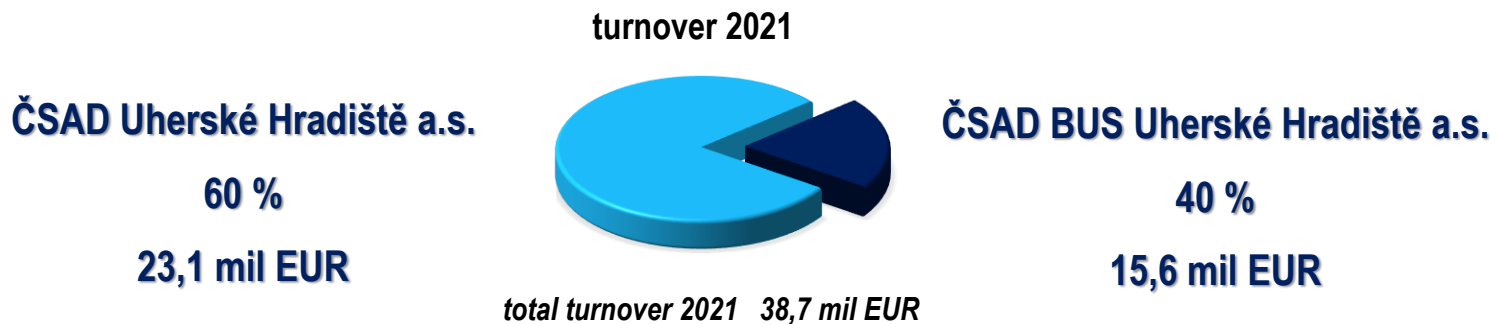


# Content

1. ČSAD Uherské Hradiště
2. Basic information – ČSAD Uherské Hradiště a.s.
3. Main activities of freight transport division
  - 3.1 Full truck loads
  - 3.2 Part loads and groupage shipments
  - 3.3 Distribution in the Czech Republic, Slovakia and Hungary
  - 3.4 Warehousing and logistics
  - 3.5 Customs service
4. Fleet
5. Track & Trace
6. Team of dispatchers, drivers
7. Certification, qualification, insurance
8. Contact



# 1. ČSAD Uherské Hradiště



## 2. Basic information – ČSAD Uherské Hradiště a.s.

Czech transport company operating more than 26 years  
on European market (since 1993)



data 2021

- annual turnover 23,1 mil EUR
- 29 640 realized transports
- 257 direct employees

head office in Uherské Hradiště ●

subsidiaries : ●

- 250 90 Jirny (Praha)
- 691 23 Pohořelice (Brno)
- 688 01 Uherský Brod

warehouses / cross-docks: ●

- 252 19 Rudná
- 691 23 Pohořelice
- 686 01 Uherské Hradiště





### 3. Main activities of freight transport division

- ☐ Full truck loads across Europe (FTL)
- ☐ Groupage service (LTL) across Europe with a focus on the Balkans
- ☐ Distribution in the Czech Republic, Slovakia and Hungary
- ☐ Warehousing and logistics
- ☐ Customs service



## 3.1 Full truck loads

*Main destinations from the Czech Republic and Slovakia:*

Benelux	Slovakia
Croatia	Spain
France	Serbia
Greece	Turkey
Italy	Ukraine
Romania	



■ regular routes  
■ frequent routes



- ❑ **ADR transports** – whole fleet with ADR equipment
- ❑ **JIT transports and TW deliveries** (time window)
- ❑ **Express deliveries**

## 3.2 Partloads and groupage shipments

- ❑ own system of collection goods in CZ and SK
- ❑ cross docks (Praha, Brno, Uherské Hradiště)
- ❑ shipments over 3t direct loadings
- ❑ regular external lines between terminals
- ❑ reliable foreign partners



***Main destinations from the Czech Republic and Slovakia:***



Albania

Benelux

Bosnia-

Herzegovina

Bulgaria

Monte Negro

France

Greece

Italy

Hungary

Macedonia

Malta

Moldavia

Romania

Slovakia

Serbia

Spain

Tunisia

***Transport from Poland to the Czech Republic***

### 3.3 Distribution in the Czech republic, Slovakia and Hungary

**Daily more than 500 distribution sites in CZ, SK and HU**

Tires, oils, lubricants, spare parts, toys, plastics, chemist goods...

**Distribution in mode D+1 (D+0)**

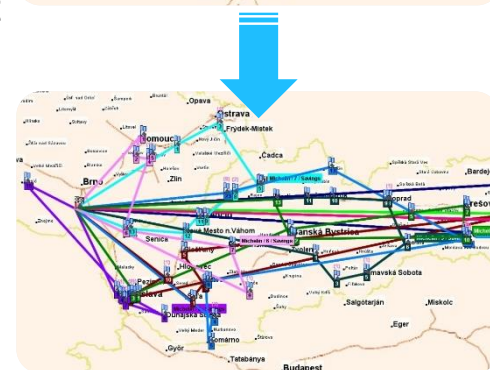
**Night distribution** – delivery of shipment without presence of a client

**ADR goods** (dangerous goods)

**Vehicles with tail lift, boxes**

**Optimization processes with links to the track & trace**

- ☐ IS to optimize routes
- ☐ data exchange via EDI
- ☐ possibility to send information concerning delivery of the shipment
- ☐ provide scanned POD via electronic or through the web portal
- ☐ the use of barcodes
- ☐ KPI performance





## 3.4 Warehousing and logistics

Available storage capacities in these areas:

**Praha** (Stránčice, Rudná)

**Brno** (Pohořelice) complete logistics and distribution services (Cross Dock), 5 800 m<sup>2</sup> of warehouse space. 1 300 m<sup>2</sup> of warehouse space for ADR goods.

**Uherské Hradiště** 2 800 m<sup>2</sup> warehousing space for different logistics activities

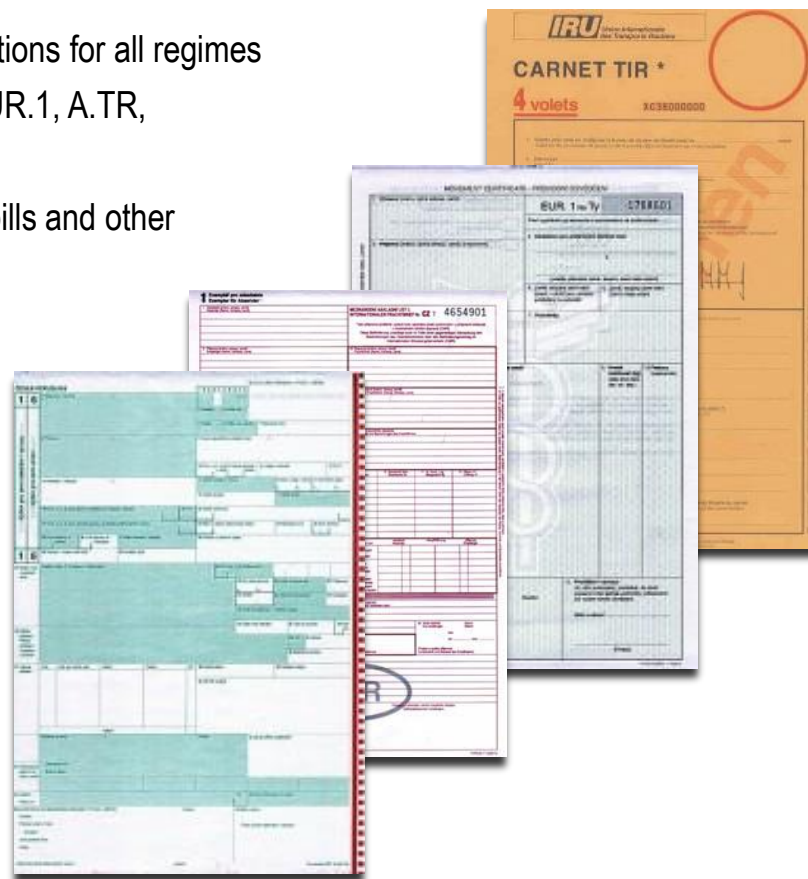
- ☐ cross docking
- ☐ receipt of goods, storage, dispatch
- ☐ survey of storages
- ☐ pallet service
- ☐ bonded warehouses
- ☐ KPI statistics and reports



## 3.5 Customs service

Own customs agency in Uherské Hradiště

- ☐ processing and filling customs declarations for all regimes
- ☐ proof of origin and status of goods (EUR.1, A.TR, certificate)
- ☐ completion of TIR Carnets, CMR waybills and other documents
- ☐ transit – own guaranty
- ☐ bonded warehouse
- ☐ administration of INTRASTAT on behalf of the client



## 4. Fleet

Type of vehicle	Number
tilt trailer 13,6m, 100 m3, 24 t	95
tilt semi-trailer 15m, 120 m3 DD, 24t	4
Box, tilt 7m, 50 m3, 10t	4
tilt 7m, 50 m3, 6t	15
van 15 m3, 2,6t	12
van 10 m3, 1,3t	10
<b>Complete Fleet</b>	<b>140</b>

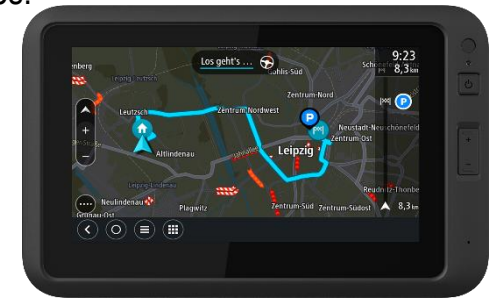
- ❑ **Double decks** – solutions for loading of nonstackable goods (up to 66 euro pallets).
- ❑ **Vehicles with tail lift, boxes.**
- ❑ Vehicles emission EURO 6, EURO 5, EEV.
- ❑ 100 m3 Trailers certified for tires transports.
- ❑ Fleet of contractual partners.



## 5. Track & Trace

### Webfleet Solution – GPS System, Fleet management

- ❑ Immediate information about position of truck and drivers operation.
- ❑ Up to date information related to planned loading and unloading times.
- ❑ Access to data concerning the shipments via the website.
- ❑ Navigation and communication systém.
- ❑ Statistic information (driving and drivers operation).





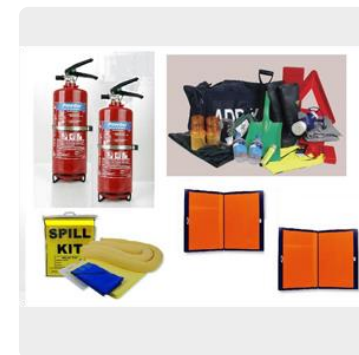
## 6. Team of dispatchers, drivers

### Team of professional dispatchers

- ❑ Communication in English, French, Russia and German.
- ❑ Continues improvement of professional and foreign language skills.
- ❑ Availability out of working time 24/7, standard working time 8:00 – 16:00.
- ❑ Permanent phone, sms and e-mail communication.
- ❑ Ability to manage stress situation.

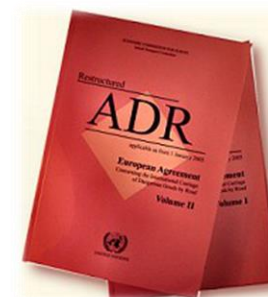
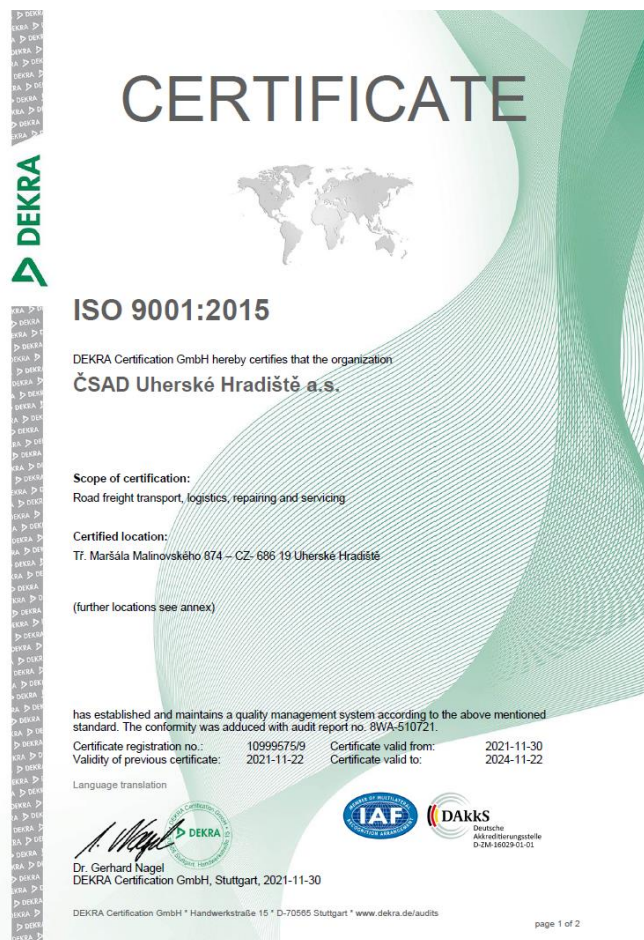
### Drivers

- ❑ Possibility of communication through Tom Tom systém.
- ❑ All drivers are equipped by mobile phones.
- ❑ Continues improvement of drivers skills.
- ❑ All drivers with ADR license.
- ❑ Knowledge of clients procedures requests.



## 7. Certification, qualification, insurance

- ☐ ISO 9001:2008 Certification.
- ☐ ADR (all drivers with ADR license).
- ☐ Insurance CMR + up to 400.000 EUR, Insurance of forwarder.



### INSURANCE CERTIFICATE

Insurance policy no. 8849004306  
 Insurer: Kooperativa pojišťovna, a.s., Vienna Insurance Group, Company ID: 47116617  
 Policyholder: ČSAD Uherské Hradiště a.s., Company ID: 49445910

Insurer confirms herewith that the insurance policy above was contracted between the insurer and policyholder; as at the day of issue, this insurance policy covers – in the scope defined in the policy incl. insurance terms and conditions that form an integral part – carrier's liability to compensate damage inflicted to tangible movable items which the insured took over in order to transfer them as load by a road vehicle listed in the insurance policy, unless the obligation to compensate such damage arises from the Czech legislation, incl. Convention on the Contract for the International Carriage of Goods by Road (CMR Convention)

Insurance start: 1.4.2022  
 Insurance end: 31.3.2023  
 Compensation limit: 10 000 000 CZK  
 Covered territory: Europe incl. the Czech Republic except for countries of former Soviet Union (Lithuania, Latvia and Estonia are not excluded), if not agreed differently in the Insurance Policy.

Insured vehicles: The insurance covers damages occurred during transport provided that the vehicles used to transport are owned by the insured or that the insured is authorized to use.

Insured: identical with policyholder

The insurance covers also the liability rider for third party carriers transporting the items based on the agreement signed directly with the insured listed in the insurance policy also by vehicles not explicitly listed in the insurance policy.

Sublimit for third party carrier: 3 000 000 CZK

In case of discrepancies, the Czech version shall prevail.

In Zlín as at 16.03.2022

Mgr. Filip Machula  
 Digitálně podepsal  
 Datum: 2022.03.16  
 15:06:48 +01'00'

E-mail: info@koop.cz

Jaroslava Zikmundová  
 Digitálně podepsal  
 Datum: 2022.03.16  
 14:59:29 +01'00'

Jaroslava Zikmundová  
 underwriter

Kooperativa pojišťovna, a.s. Podskalská 660/21 106 00 Praha 8 zapsaná u rejstříkového soudu v Praze, IČ 47116617, DIČ CZ099000955 info@koop.cz Infolinie 957 105 105  
 Vienna Insurance Group spis. zn. B 1887, zákl. kapitál: 3 mld. Kč DIČ (statist.) CZ47116617 www.koop.cz

## 8. Contact

### Kamil Maděra

LTL Department manager

GSM: +420 602 591 276

Tel: +420 572 524 735

E-mail: [kamil.madera@csaduh.cz](mailto:kamil.madera@csaduh.cz)

### Vlastislav Čech

CSO

GSM: +420 602 581 284

Tel: +420 572 524 140

E-mail: [vlastislav.cech@csaduh.cz](mailto:vlastislav.cech@csaduh.cz)

### Petr Matyáš

Logistics manager

GSM: +420 724 253 283

Tel: +420 572 524 277

E-mail: [petr.matyas@csaduh.cz](mailto:petr.matyas@csaduh.cz)

ČSAD Uherské Hradiště a.s., Malinovského 874, CZ 686 19 Uherské Hradiště

